

**group 5**

## **group 5**

36 LOGEMENTS SOCIAUX  
OLGGA  
2014 / LILLE / FRANCE

IBA SOCIAL HOUSING  
EISENMAN ARCHITECTS  
1985 / BERLIN / GERMANY

GALLARATESE DISTRICT  
ALDO ROSSI AND CARLO AYMONINO  
1972 / MILAN / ITALY

MIX DWELLING BUILDING  
COLL-LECLERC  
2017 / BARCELONA / SPAIN

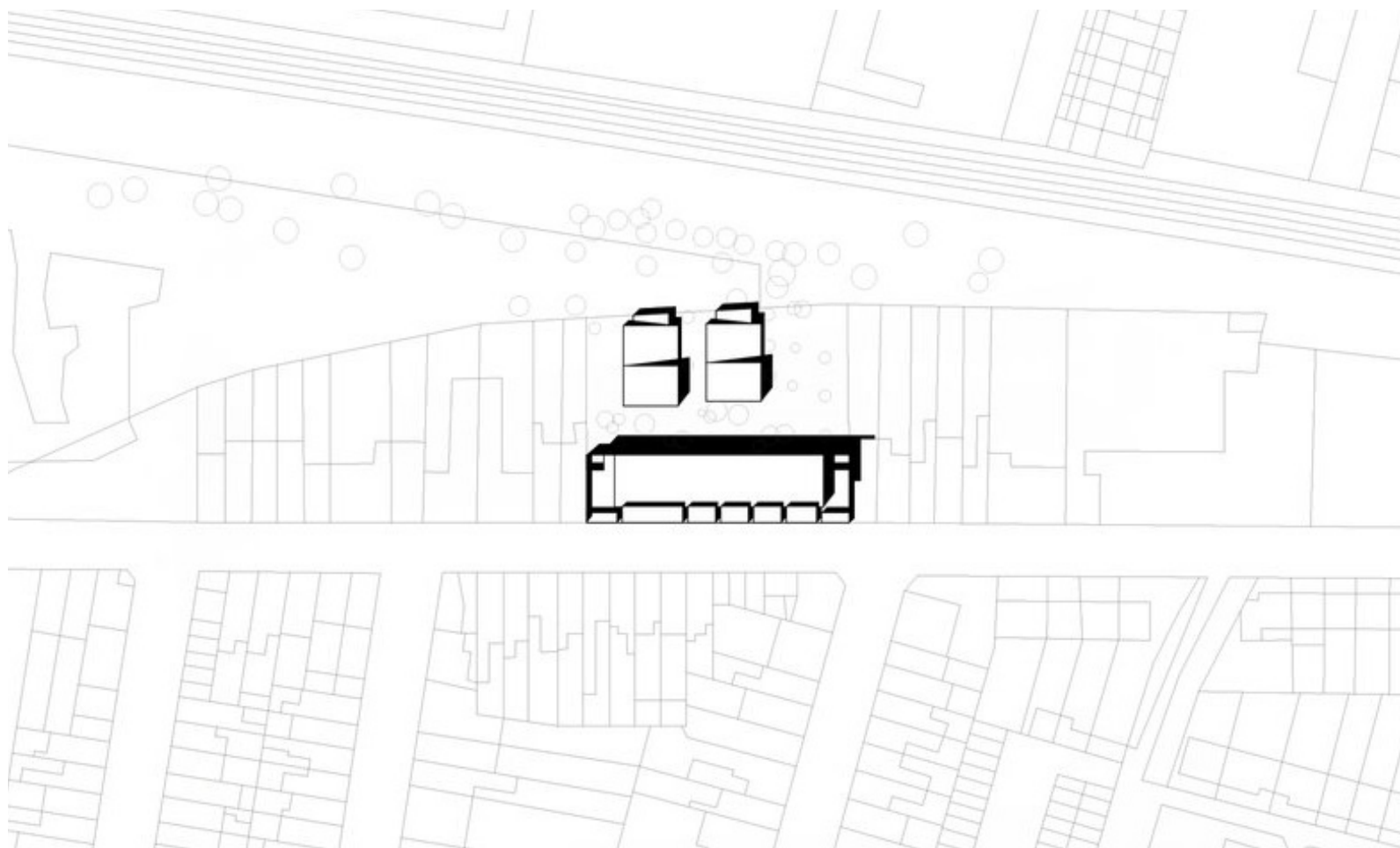
10,7 million people are living in social houses, 16% of the population  
4,5 million of social houses in france, 12% of housing  
57% of social houses in big cities

FRANCE

36 LOGEMENTS SOCIAUX  
OLGGA  
2014 / LILLE / FRANCE



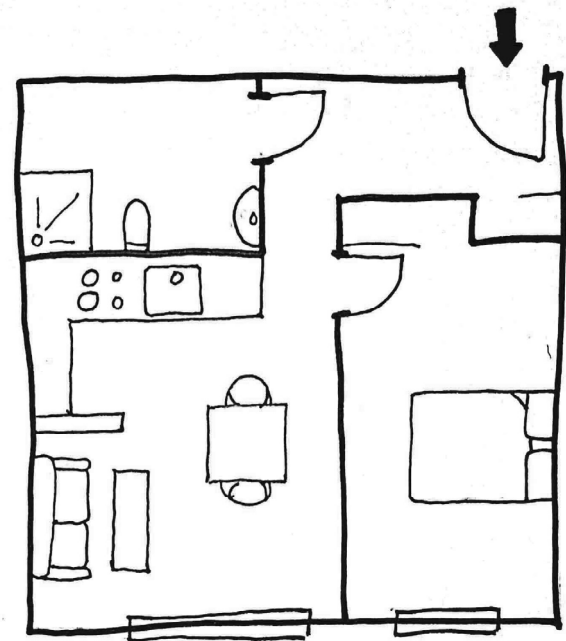
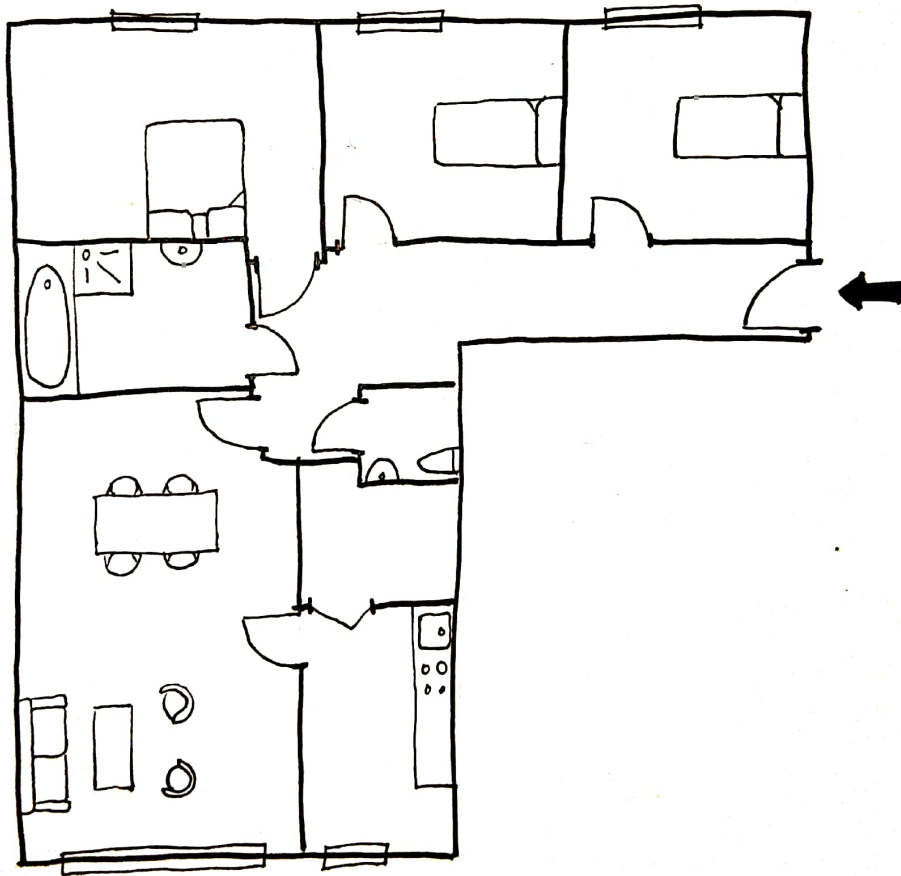
36 LOGEMENTS SOCIAUX  
OLGGA  
2014 / LILLE / FRANCE



36 LOGEMENTS SOCIAUX  
OLGGA  
2014 / LILLE / FRANCE



36 LOGEMENTS SOCIAUX  
OLGGA  
2014 / LILLE / FRANCE



36 LOGEMENTS SOCIAUX  
OLGGA  
2014 / LILLE / FRANCE





36 LOGEMENTS SOCIAUX  
OLGGA  
2014 / LILLE / FRANCE



36 LOGEMENTS SOCIAUX  
OLGGA  
2014 / LILLE / FRANCE

5,4% of rented flats are social housing  
40-50% of population in cities would need  
numbers decrease

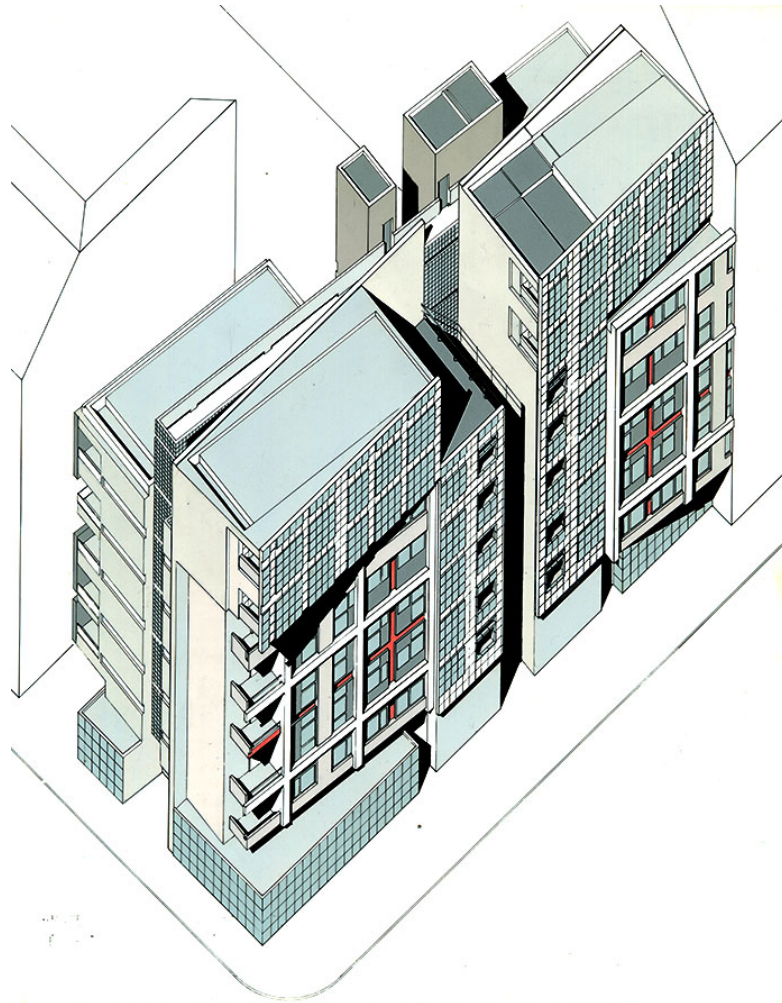
GERMANY

IBA SOCIAL HOUSING  
EISENMAN ARCHITECTS  
1985 / BERLIN / GERMANY

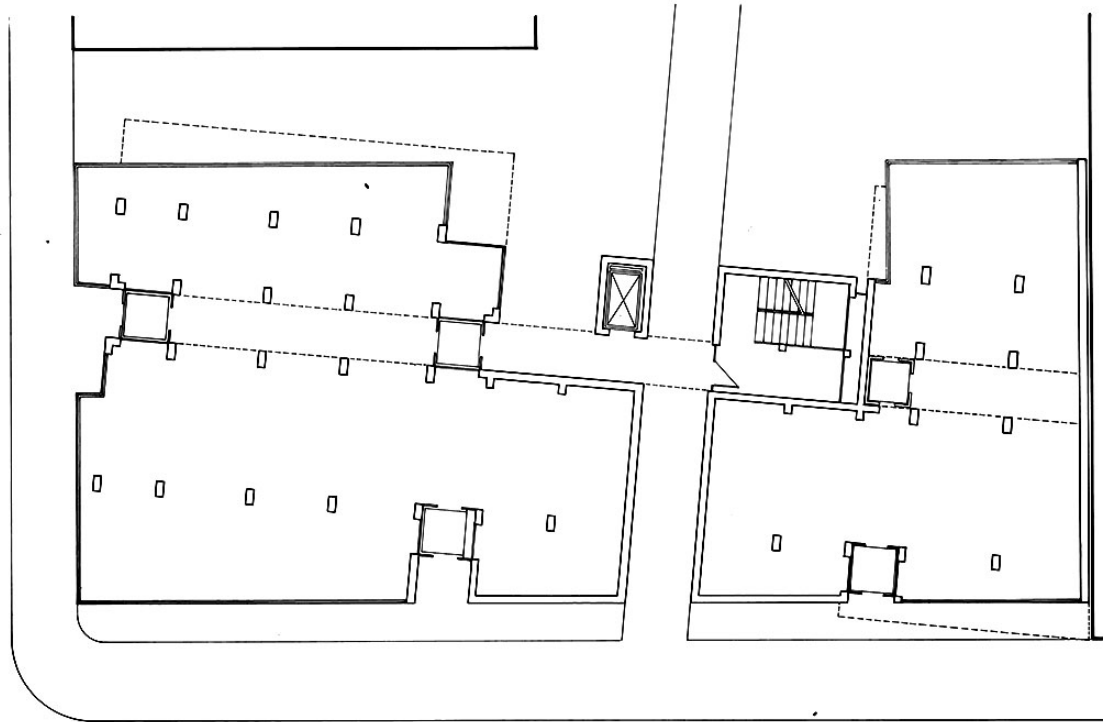




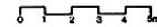
IBA SOCIAL HOUSING  
EISENMAN ARCHITECTS  
1985 / BERLIN / GERMANY



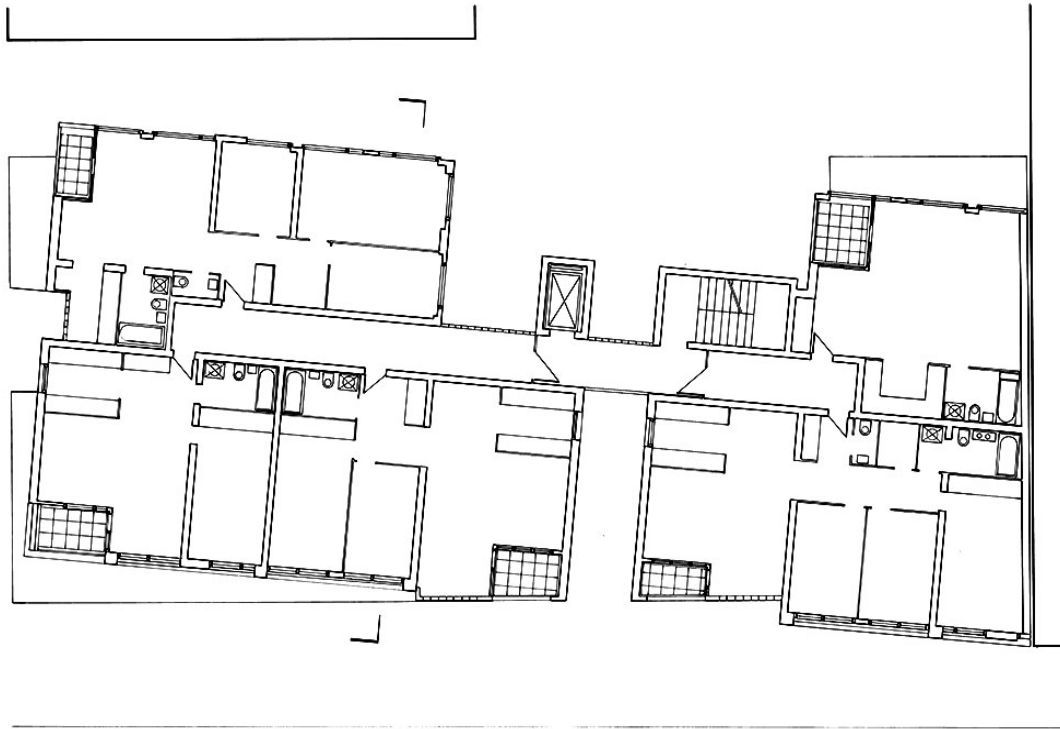
IBA SOCIAL HOUSING  
EISENMAN ARCHITECTS  
1985 / BERLIN / GERMANY



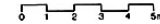
GROUND FLOOR PLAN



IBA SOCIAL HOUSING  
EISENMAN ARCHITECTS  
1985 / BERLIN / GERMANY

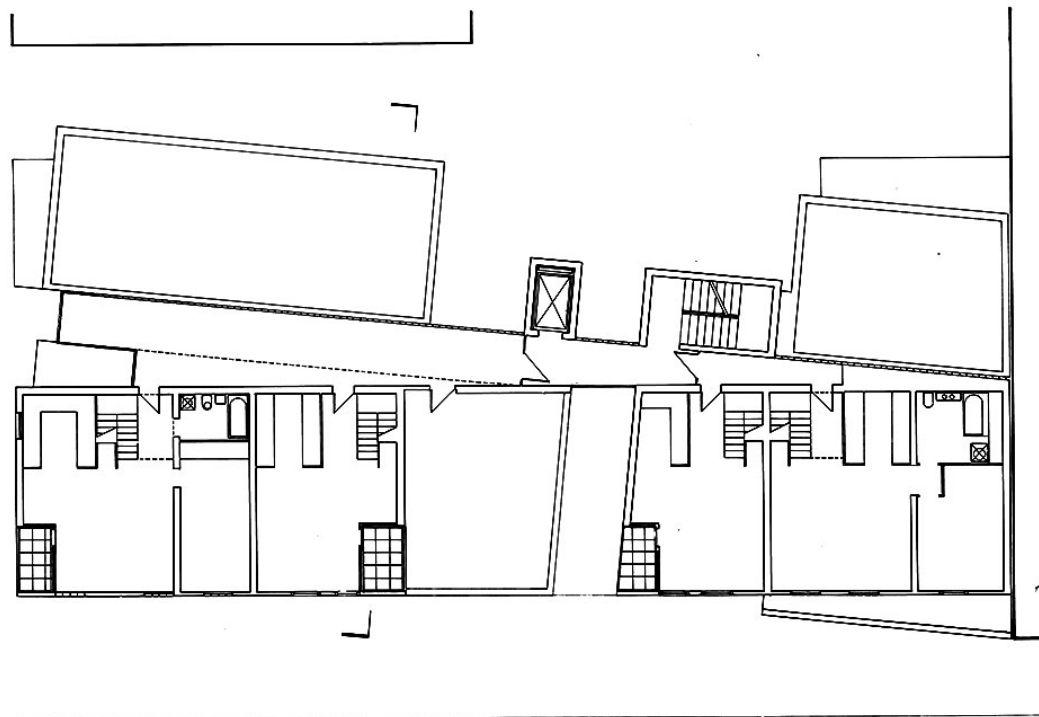


TYPICAL FLOOR PLAN

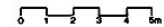


IBA SOCIAL HOUSING  
EISENMAN ARCHITECTS  
1985 / BERLIN / GERMANY





PENTHOUSE PLAN LOWER LEVEL



IBA SOCIAL HOUSING  
EISENMAN ARCHITECTS  
1985 / BERLIN / GERMANY

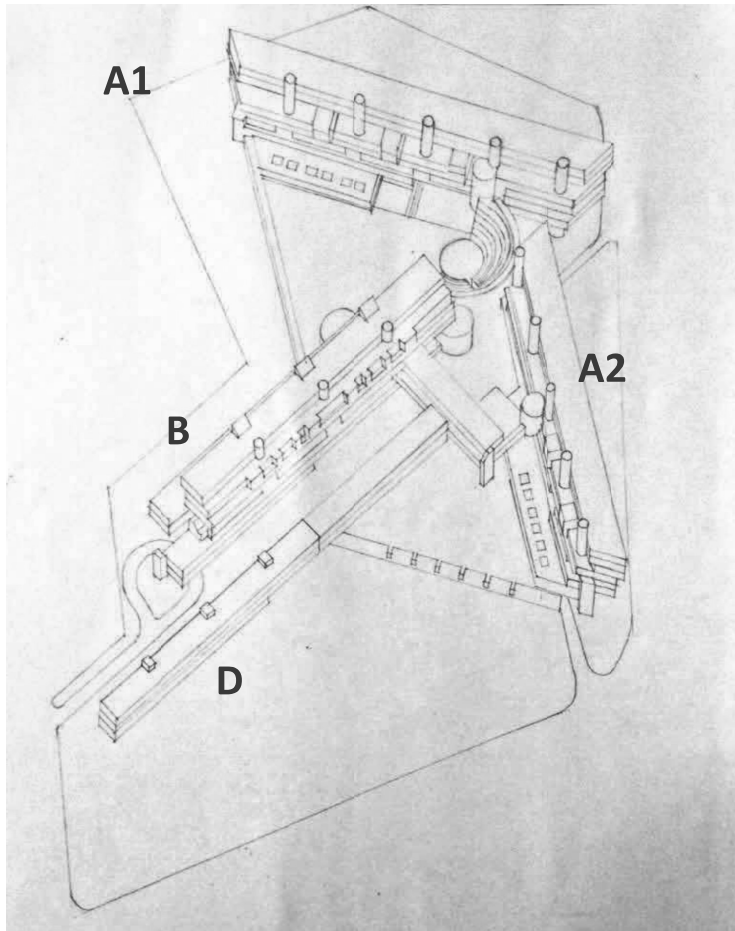


IBA SOCIAL HOUSING  
EISENMAN ARCHITECTS  
1985 / BERLIN / GERMANY

social housing includes about 973000 houses  
4,5% of the whole housing stock

ITALY

GALLARATESE DISTRICT  
ALDO ROSSI AND CARLO AYMONINO  
1972 / MILAN / ITALY



BUILDING A1



BUILDING A2



BUILDING B



BUILDING D

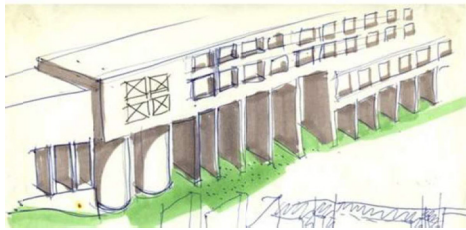
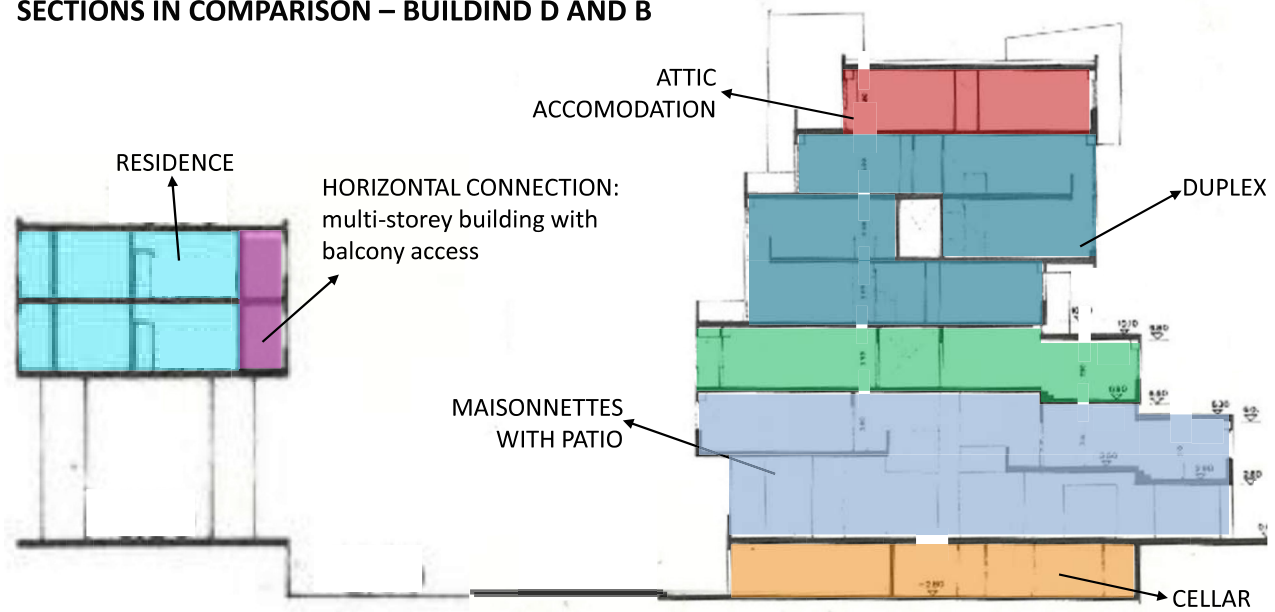
GALLARATESE DISTRICT  
ALDO ROSSI AND CARLO AYMONINO  
1972 / MILAN / ITALY



GALLARATESE DISTRICT  
ALDO ROSSI AND CARLO AYMONINO  
1972 / MILAN / ITALY

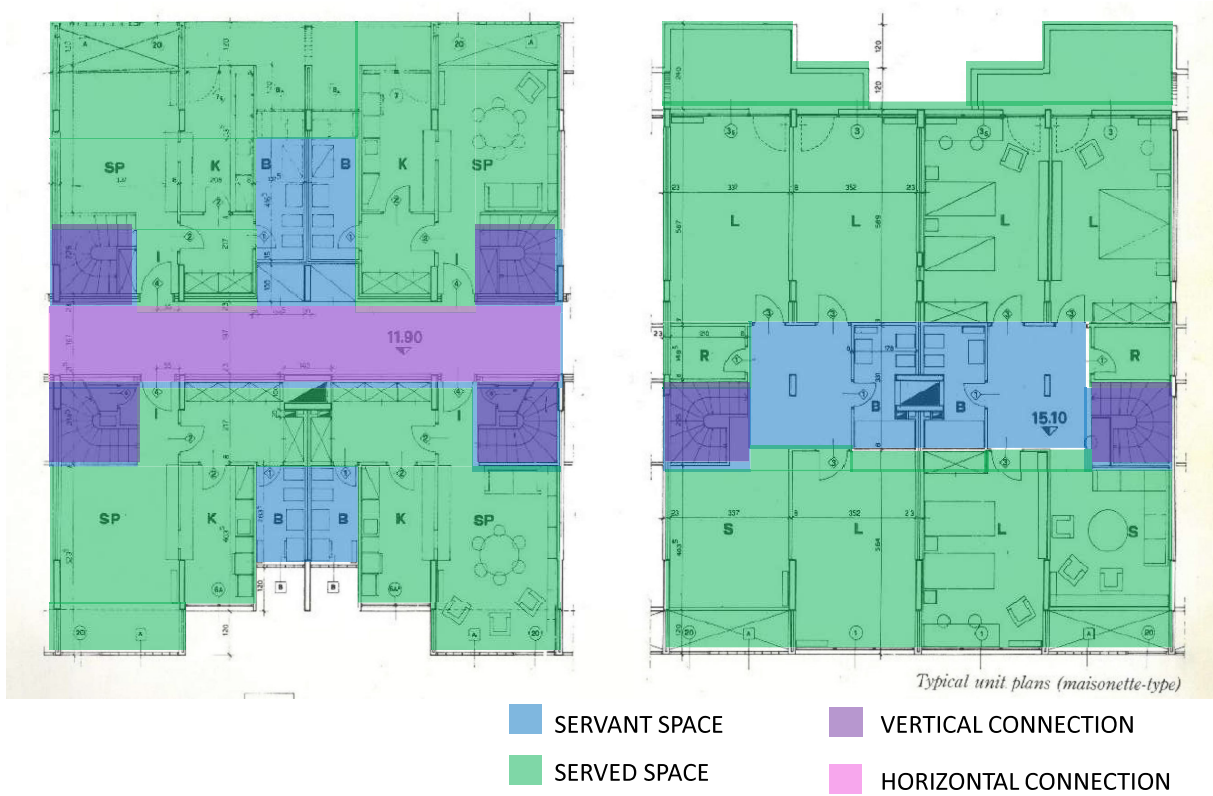


## SECTIONS IN COMPARISON – BUILDING D AND B



GALLARATESE DISTRICT  
ALDO ROSSI AND CARLO AYMONINO  
1972 / MILAN / ITALY

## CARLO AYMONINO'S BUILDINGS, maisonnette type



GALLARATESE DISTRICT  
ALDO ROSSI AND CARLO AYMONINO  
1972 / MILAN / ITALY

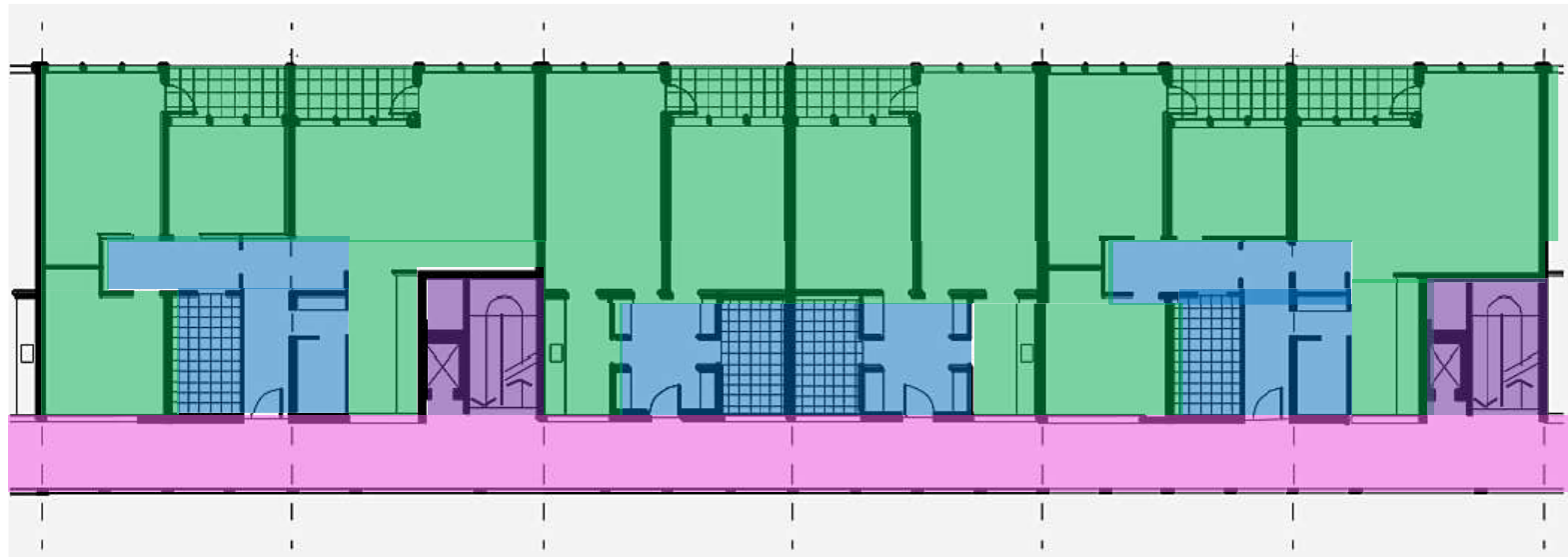


## CARLO AYMONINO'S BUILDINGS



GALLARATESE DISTRICT  
ALDO ROSSI AND CARLO AYMONINO  
1972 / MILAN / ITALY

## ALDO ROSSI'S BUILDING



■ SERVANT SPACE

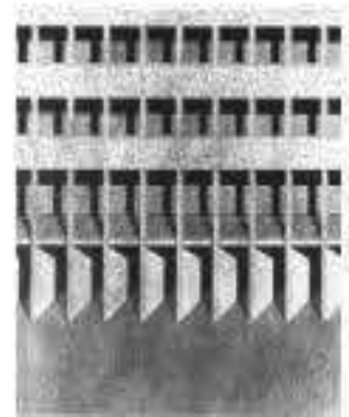
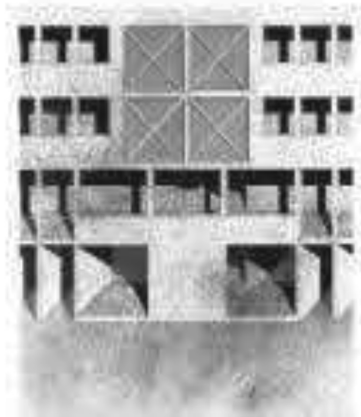
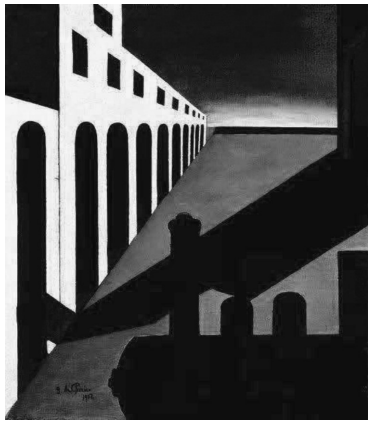
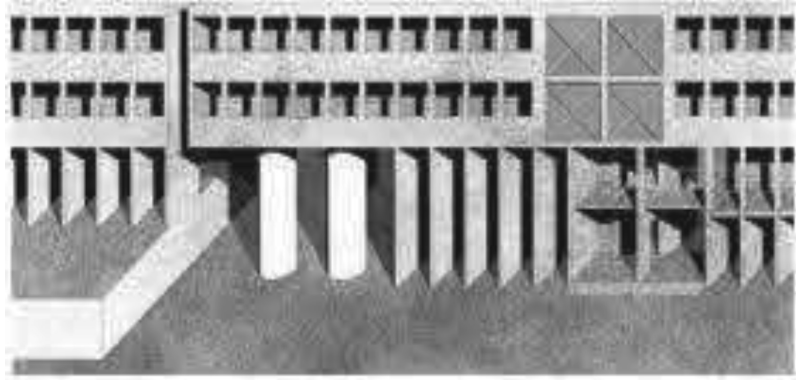
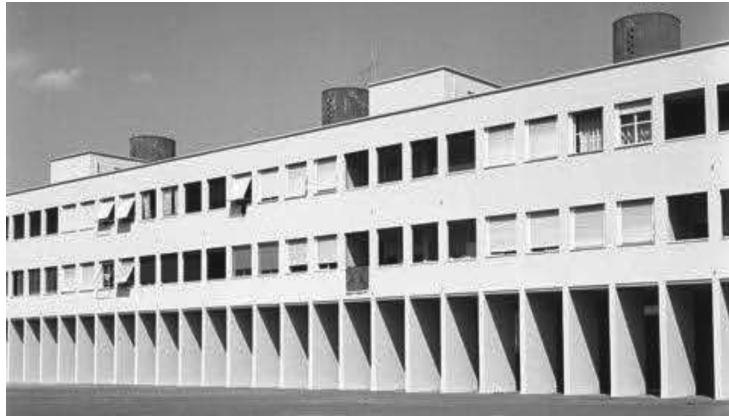
■ VERTICAL CONNECTION

■ SERVED SPACE

■ HORIZONTAL CONNECTION

GALLARATESE DISTRICT  
ALDO ROSSI AND CARLO AYMONINO  
1972 / MILAN / ITALY

# ALDO ROSSI'S BUILDING



GALLARATESE DISTRICT  
ALDO ROSSI AND CARLO AYMUNINO  
1972 / MILAN / ITALY

2% of the whole housing stock

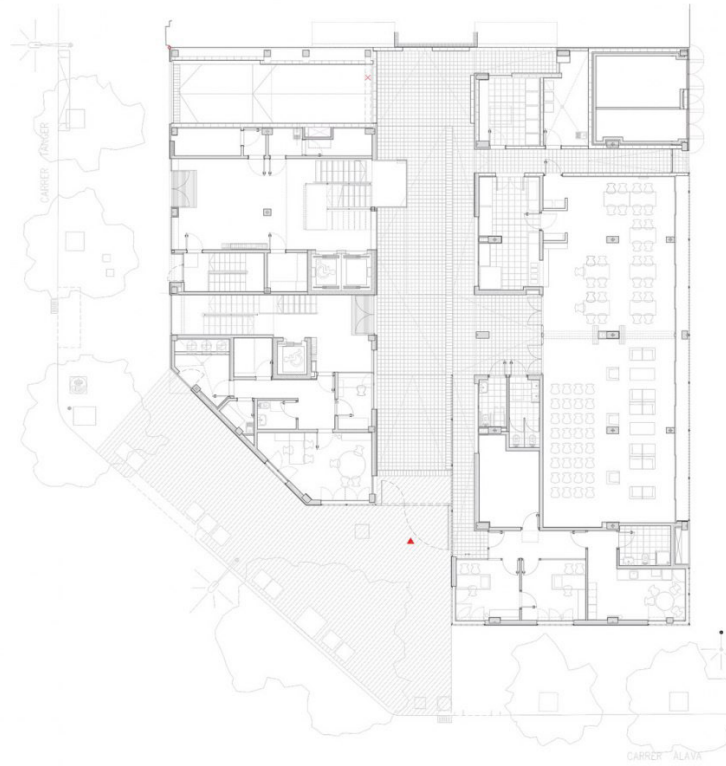
SPAIN

MIX DWELLING BUILDING  
COLL-LECLERC  
2017 / BARCELONA / SPAIN



MIX DWELLING BUILDING  
COLL-LECLERC  
2017 / BARCELONA / SPAIN

PLANTA BAJA



MIX DWELLING BUILDING  
COLL-LECLERC  
2017 / BARCELONA / SPAIN

PLANTA TIPO (QUINTA)



MIX DWELLING BUILDING  
COLL-LECLERC  
2017 / BARCELONA / SPAIN



ALZADO SUR\_PASAJE



ALZADO NORTE\_CALLE TÀNGER

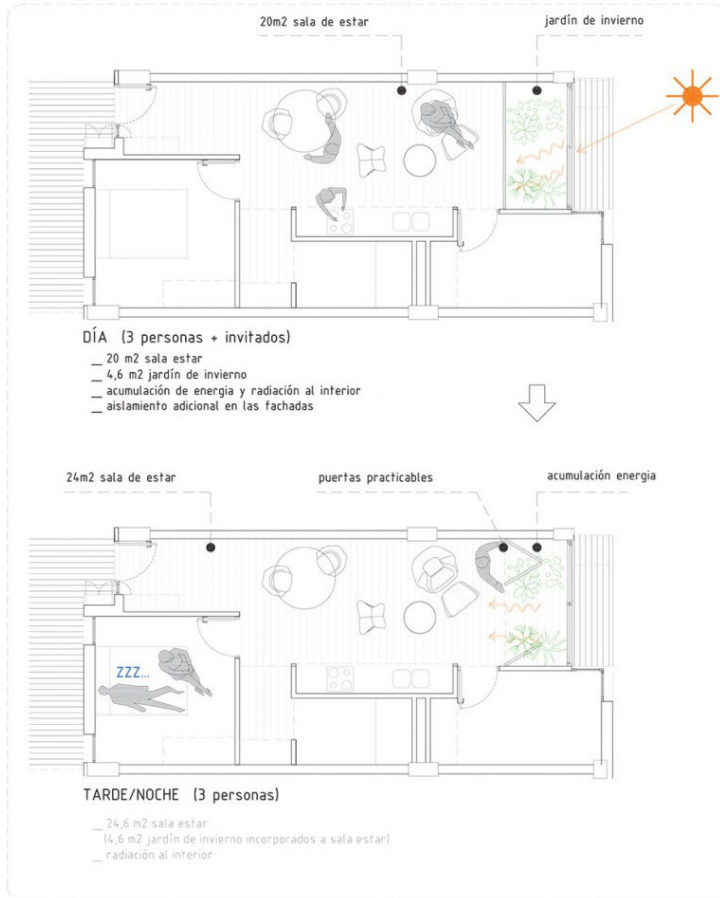


MIX DWELLING BUILDING  
COLL-LECLERC  
2017 / BARCELONA / SPAIN

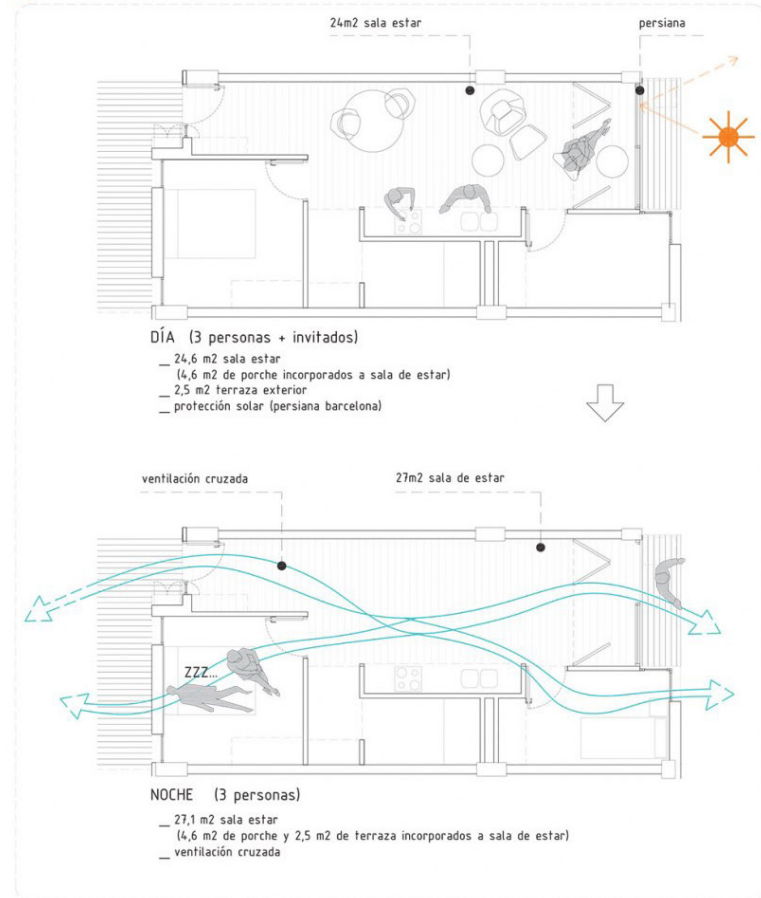


MIX DWELLING BUILDING  
COLL-LECLERC  
2017 / BARCELONA / SPAIN

INVIERNO // 21.12



VERANO // 21.06



MIX DWELLING BUILDING  
COLL-LECLERC  
2017 / BARCELONA / SPAIN

